

Modular Box Forms



Hawkeye Pedershaab
Concrete Technologies Worldwide TM

- Adaptable Components • Precise Assembly
- Exact Joint Ring Segments • Diverse Vibration Applications

Modular Box Forms

Versatile box section forming components

HawkeyePedershaab modular box culvert equipment is the world's premier forming system utilized by market leaders in all corners of the globe. Adjustable and versatile, the equipment is designed for both dry-cast and wet-cast processes and is used to produce standard boxes, 3-sided boxes, double boxes & galleries.

Conventional jacket vibration style form equipment is available, as well as advanced vibration styles for maximum compaction and density.

System Benefits

Adaptable components. The modular form and joint ring components can be configured to manufacture a wide range of products with a single set of components.

Precise assembly. Forming components are pegged and machined to facilitate precise assembly for the manufacture of high-quality box sections.

Exact joint ring segments. Machined joint ring segments are capable of manufacturing both gasketed or mortar joints.

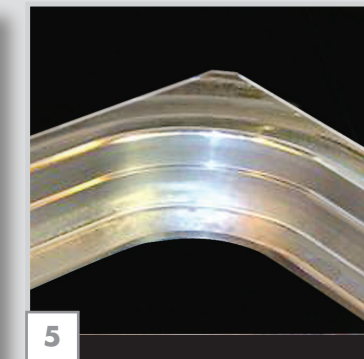
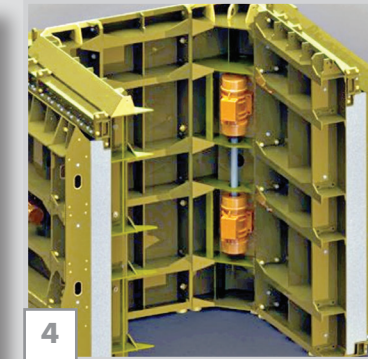
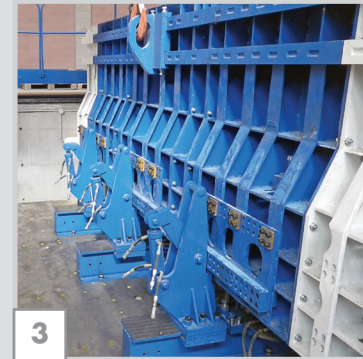
Diverse vibration applications. Vibration styles are available for various applications, including: conventional jacket vibration, vertical vibration provided by a VIH Y vibration table, and powerful synchronized core vibration. All are controlled by a computerized vibration control module.

Operation

The HawkeyePedershaab modular box form system incorporates adjustable steel forms to produce box culverts up to 5 meters (16') in span and 3.6 meters (12')* in rise in varying lengths and wall thicknesses.

*Larger dimensions may be produced if such a need exists.

The molds are designed for use with a variety of manufacturing systems, including: wet-cast, egg-lay, and use on HawkeyePedershaab or other makes of vibration machines.



1. Versatile Production

The modular box form is designed for use on HawkeyePedershaab machines, but is capable of being used on independent dry cast production stations or machines of different makes.

2. Precise Products

The modular box form system is engineered to produce boxes with unmatched precision and incomparable dimensional accuracy. The form's heavy duty construction and the accurate fit of the form segments permit the manufacture of box products with tolerances precise enough for gasketed box culvert applications.

3. Optional Vertical Vibration

Vertical vibration provided by a VIH Y vibration table allows for optimal compaction and maximum density.

4. Optional Synchronized Core Vibration

The modular form core includes integrated, synchronized vibrators to provide the primary source of vibration. This exclusive vibration process allows the form to be built with rigid stiffeners to minimize form deflection for the manufacture of precise and dimensionally accurate products.

5. Accurate Joints

Torsional, heavy duty pallets ensure structural integrity throughout the production process for accurate joints.

6. Flexible, Modular Design

Adjustable, steel form components provide flexibility in the selection of critical dimensions, including length, span, rise, and wall thickness.



At HawkeyePedershaab we deliver more than machines.

We deliver solutions.



The Americas and Asia
506 S. Wapello Street
Mediapolis, Iowa 52637 USA
Phone: +1 (319) 394-3197
Telefax +1 (319) 394-3977

Africa, Australia, Oceania, Europe
Saltumvej 25
9700 Brønderslev – Denmark
Phone: +45 9645 4000
Telefax: +45 9645 4040

info@hawkeyepedershaab.com
www.hawkeyepedershaab.com

